

**MINING, TUNNELLING AND INDUSTRIAL ALIGNMENT**



**LASERS FOR MINING & INDUSTRIAL ALIGNMENT**

[MOBA-AUTOMATION.COM.AU](http://MOBA-AUTOMATION.COM.AU)

# MINING AND TUNNELLING LASERS - DESIGNED FOR HARSH OPERATING ENVIRONMENTS

**MOBA's mining and tunnelling lasers** enable accurate alignment of tunnels being constructed by tunnel boring machines, drill and blast, pipe jack or conventional hand techniques.

**MOBA lasers** are waterproof and rugged thanks to all-metal construction. The lasers are based on diode technology and can be powered from internal batteries or external power supply.

**MOBA** also offers intrinsically safe lasers which do not require explosion proof containment when working in gaseous environments such as methane/air mixtures. The intrinsically safe lasers are waterproof, rugged and constructed of stainless steel and brass.

## TAIL LASER

This calibrated laser is used in mining industry to show a reference point. A brass tail end is set with quick drying cement in a pre-drilled hole with SB.300.TAIL aimed at the required reference point. When cement is cured the laser can be removed and replaced at any time to show the reference point.

### AVAILABLE MODELS:

SB.300.TAIL - standard laser  
SB.300.TAIL.LR - long range laser

## SB & DB SERIES LASERS

The SB & DB series lasers solve many alignment problems throughout various industries including mining, industrial machine control, wheel alignment and manufacturing process control.

The lasers are powered by either battery cells or external power and produce a visible red beam at either one or both ends, depending on the model.

Various clamps have been developed to ensure SB & DB series lasers can be easily mounted in any required position.



Available models:	SB.111/DB.111	DB.200	SB.300/DB.300	SB.400/DB.400	SB.500/DB.500
Power	3 x LR44	12-24V	4x N	4x AA	4x AAA
Operating time	0.5 hrs	N/A	6 hrs	30 hrs	15 hrs

# INTRINSICALLY SAFE LASERS - BATTERY POWERED INTRINSICALLY SAFE LASERS FOR WORK IN GASEOUS ENVIRONMENTS

## LD.25.IS / LD.35.IS

- » CERTIFICATE No. IECEx SIM 13.0004
- » Classification code: Ex ia I/IIC T3 IP55 (LD.25.IS)
- » Classification code: Ex ia I/IIC T4 IP55 (LD.35.IS)
- » Range: 200m
- » Beam diameter at exit: 5mm
- » Power: LD.25.IS 2xAA cells; LD.35.IS 2xC cells
- » Shown with optional gimbal bracket



01

## LD.60.IS

- » CERTIFICATE No. IECEx SIM 11.0003
- » Classification code: Ex ia I/IIC T4 IP55
- » Range: 500m
- » Beam diameter at exit: 13mm
- » Power: 4xD cells
- » Shown with optional gimbal bracket



02

# 60 SERIES LASERS - LONG RANGE TUNNELLING LASERS WITH INTERNAL OR EXTERNAL POWER SUPPLY AND RANGE OF UP TO 425M

## LD.60.B with optional gimbal bracket

- » Available with red or green beam
- » Powered via internal batteries or external power supply
- » Shown with optional gimbal bracket



01

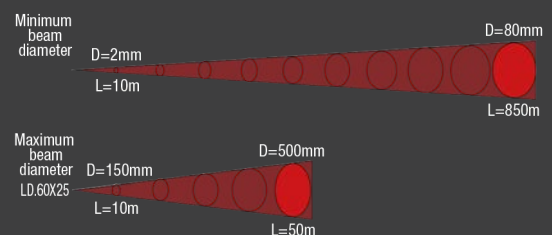
## LD.60x25B with optional gimbal bracket

- » The LD.60X25 give you ability to adjust the focus and therefore the size of the laser beam, making it ideal for alignment over long distances
- » Available with red or green beam
- » Powered via internal batteries or external power supply
- » Shown with optional gimbal bracket



02

Available models:	LD.60	LD.60.B	LD.60X25	LD.60X25B
Laser beam	Red	Red	Red	Red
Beam diameter	10mm	10mm	Focusable	Focusable
Power	12-24V	4 x D	12-24V	4 x D
Range	500m	500m	850m	850m



# INDUSTRIAL ALIGNMENT LASERS - LASERMAX LINE LASERS

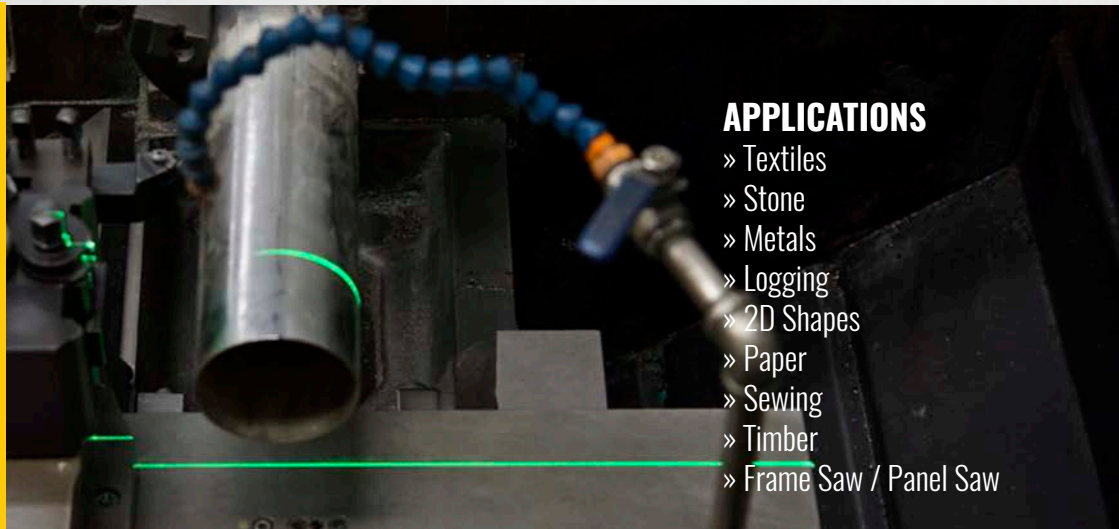
Whether you are in the timber, metal, textile or printing industry, you can increase your productivity by using accurate laser generated guidelines. Using **Lasermax line laser** can save you thousands of dollars each month by minimising waste and saving time.

The strong bright light produced by **MOBA's Lasermax** is ideal for use in even the harshest industrial environments. Initial set-up is quick and precise and the unit remains virtually maintenance free for years.

**Lasermax** is available in two models: the **ZD Lasermax** and the **ML Lasermax**. Both are available in a range of configurations to suit your application. A green beam is optional for better visibility especially when reflected on dark surfaces. Contact MOBA for an analysis of which Lasermax best fulfills your requirements.



**ML.LD Lasermax**  
shown with bracket



## APPLICATIONS

- » Textiles
- » Stone
- » Metals
- » Logging
- » 2D Shapes
- » Paper
- » Sewing
- » Timber
- » Frame Saw / Panel Saw

## ML & ZD SERIES DOT LASERS

The ML & ZD series lasers produce a straight line of visible laser light, ideal for many alignment applications. The units are housed in rugged anodised aluminium casing which is both light and strong, and are sealed and nitrogen purged to ensure they are 100 % waterproof. A range of brackets and optical accessories are available to suit the lasers.

**ML.LD Series** - externally powered red beam dot lasers with range up to 50 meters  
**ZD.LD Series** - externally powered red or green beam dot lasers with range up to 100 metres



**ML.LD laser**

# VINE AND FENCE ALIGNMENT

Grape growers recognise that one of the most time consuming tasks they encounter in vine planting is the accurate layout of vine rows.

MOBA's Vine Aligner harnesses the accuracy and efficiency of laser technology to enable efficient and precise vine planting by the user.

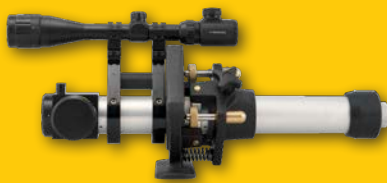
Using a **MOBA Laserguide** laser receiver further simplifies the process by enabling the user to achieve automatic or manual machinery control.

Stay in-line from the first post to the last!

The only laser of its kind delivering fencing contractors an easy to set up alignment tool.

## AVAILABLE MODELS:

- » **FP550** - maximum range of 550 meters radius
- » **FP1000/LD.60.VK** - maximum range of 1000 meters radius



**FP550**



**FP1000/LD.60.VK**

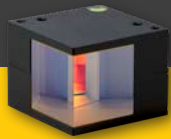
# ACCESSORIES

## PENTA PRISMS

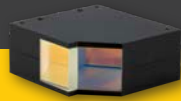
Penta prisms allow complex set-ups by reflecting the laser beam through a set angle without the need to accurately align the beam with the prism.



**A.MCE.162 - 110°**



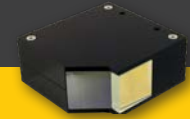
**A.MCE.029 - 90°**



**A.MCE.167 - 138°**

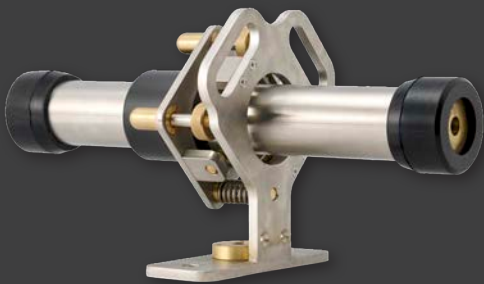


**A.MCE.191 - 70°**



**A.MCE.168 - 135°**

## RUBBER BUMPER A.60.001



60 series laser shown with optional gimbal bracket and rubber bumpers

## GIMBAL BRACKETS

Gimbal brackets allow for quick and easy mounting of the laser and accurate alignment of the laser beam in 2 axes thanks to fine adjustment knobs.

- » **A.60.004** - for 60 series
- » **A.60.004.IS** - for 60 series intrinsically safe
- » **A.35.004.IS** - for 25/35 series intrinsically safe

## EXTERNAL POWER KIT A.MCE.055

The dummy battery and the cap with input connector allow use of 60 series lasers with an external power source.

- » **Dummy battery A.MCE.067**
- » **Cap with input connector A.MCE.066**
- » **Cord A.RS.001**



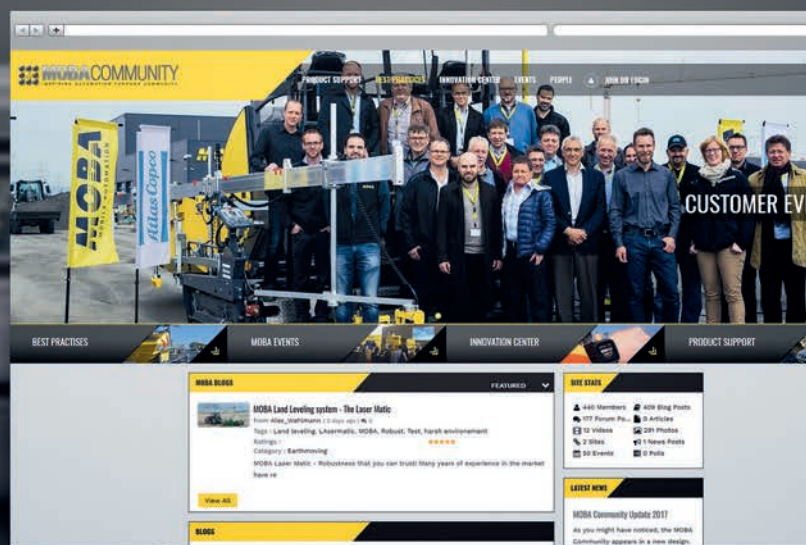
# THE EXPERT NETWORK - INSPIRING MOBILE AUTOMATION

Would you like to know how the system has already been successfully deployed by our customers? In the online expert blog, **MOBA Community**, you will find everything from job stories, feature releases, discussion forums to field reports to inform you in detail about our technologies.

Besides blog contributions regarding automation solutions of MOBA Mobile Automation AG, the Community offers numerous forums, discussions, event announcements or expert contributions about various topics of automation of construction machines. The **MOBA Community** acts as an interactive, international exchange platform for everybody who would like to participate actively in the development of this industry.

Contribute your own know-how and perspectives to interesting dialogues, post important questions regarding the (r)evolution of the industry and exchange opinions and experiences with other experts.

JOIN THE EXPERT NETWORK -  
**WWW.MOBACOMMUNITY.COM**



# YOUR EXPERTS WORLD-WIDE

//// MOBA HEADQUARTER  
//// MOBA SUBSIDIARY



## MOBA GROUP

The **MOBA GROUP** is a leading global player in the world of mobile automation. Close collaborations between the headquarters in Limburg an der Lahn and subsidiaries all over Europe, Asia, North and South America create new perspectives for recent and future developments.

Superior technical know-how and more than 40 years of experience combined with an international dealer network guarantee a premium support – **worldwide. INSPIRING MOBILE AUTOMATION** - this is what the **MOBA GROUP** stands for since more than **40 years**.

### MOBA GERMANY

65555 Limburg / Germany  
Phone: +49 6431 9577-0  
E-mail: sales@moba.de

### MOBA USA

30269 Peachtree City / USA  
Phone: +1 678 8179646  
E-mail: mobacorp@moba.de

### MOBA CHINA

116600 Dalian / China  
Phone: +86 411 39269388  
E-mail: sales@mobachina.com

### MOBA INDIA

B 210-211 Gandhinagar / India  
Phone: +91 989 855 6608  
E-mail: sdesai@moba.de

### MOBA ISE

08211 Barcelona / Spain  
Phone: +34 93 715 87 93  
E-mail: moba-ise@moba.de

### MOBA UK

S72 7PD Barnsley / UK  
Phone: +44 (0) 1226 444250  
E-mail: info-uk@moba.de

### MOBA FRANCE

77164 Ferrières en Brie / France  
Phone: +33 (0) 1 64 26 61 90  
E-mail: infos@mobafrance.com

### MOBA AUSTRALIA

Victoria 3076 / Australia  
Phone: +61 3 9357 0055  
E-mail: aumoba@moba.de

### MOBA SWEDEN

861 36 Timrå / Sweden  
Phone: +46 (0) 73-3750097  
E-mail: pwallgren@moba.de

### MOBA BRASIL

Belo Horizonte - MG / Brasil  
Phone: +55 31 7513-4959  
E-mail: mobadobrasil@moba.de

### MOBA TECMASERM

08700 Barcelona / Spain  
Phone: +34 93 804 24 85  
E-mail: moba-tecmaserm@moba.de

### MOBA DENMARK

5250 Odense / Denmark  
Phone: +45 70 26 96 91  
E-mail: jlindskov@moba.de

### MOBA CHILE

Avda. Providencia 1476  
Phone: +56 (9) 61678464  
E-mail: mjmarco@moba.de

### MOBA AUSTRIA

A-2544 Leobersdorf / Austria  
Phone: +43 664 251 0906  
E-mail: gschmid@moba.de

### NOVATRON FINLAND

33960 Pirkkala / Finland  
Phone: +358 (0) 3 357 26 00  
E-mail: sales@novatron.fi

### MOBA ITALY

37069 Villafranca di Verona / Italy  
Phone: +39 045 630-0761  
E-mail: salesitaly@moba.de

YOUR LOCAL MOBA PARTNER:



www.moba-automation.com.au  
www.moba-parts.com.au

**MOBA**<sup>®</sup>  
MOBILE AUTOMATION